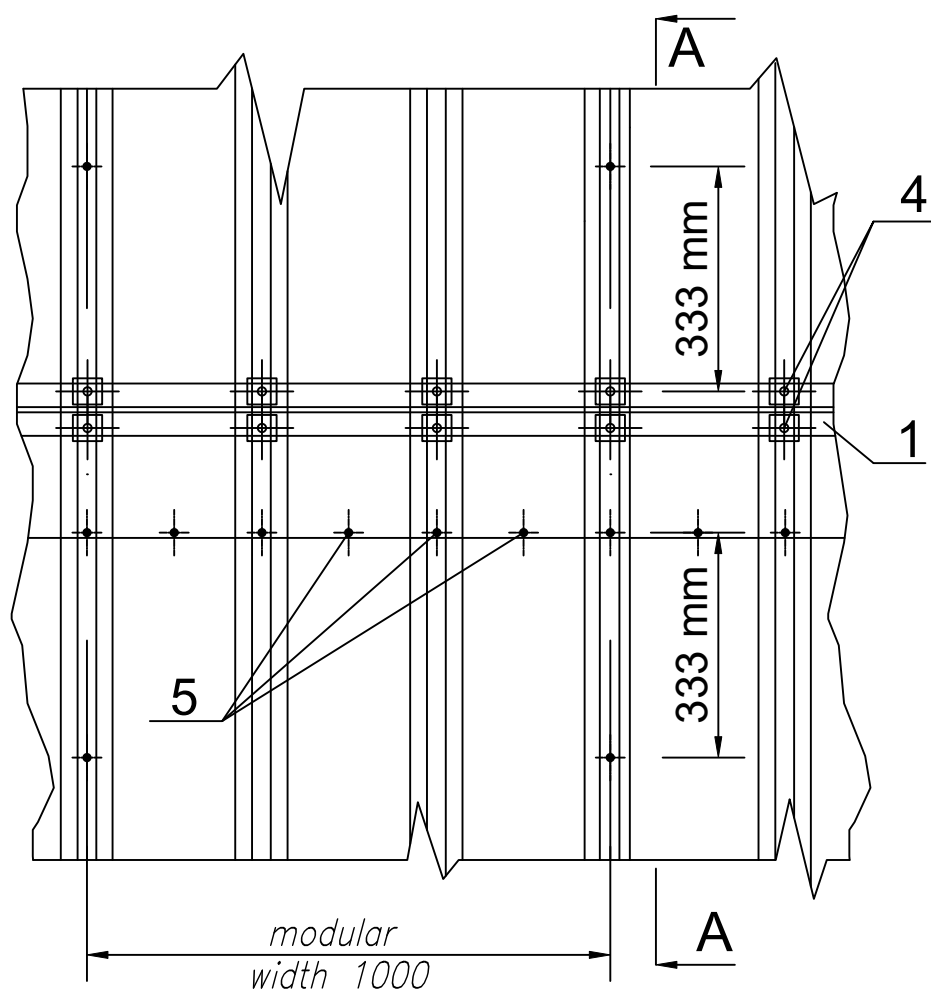
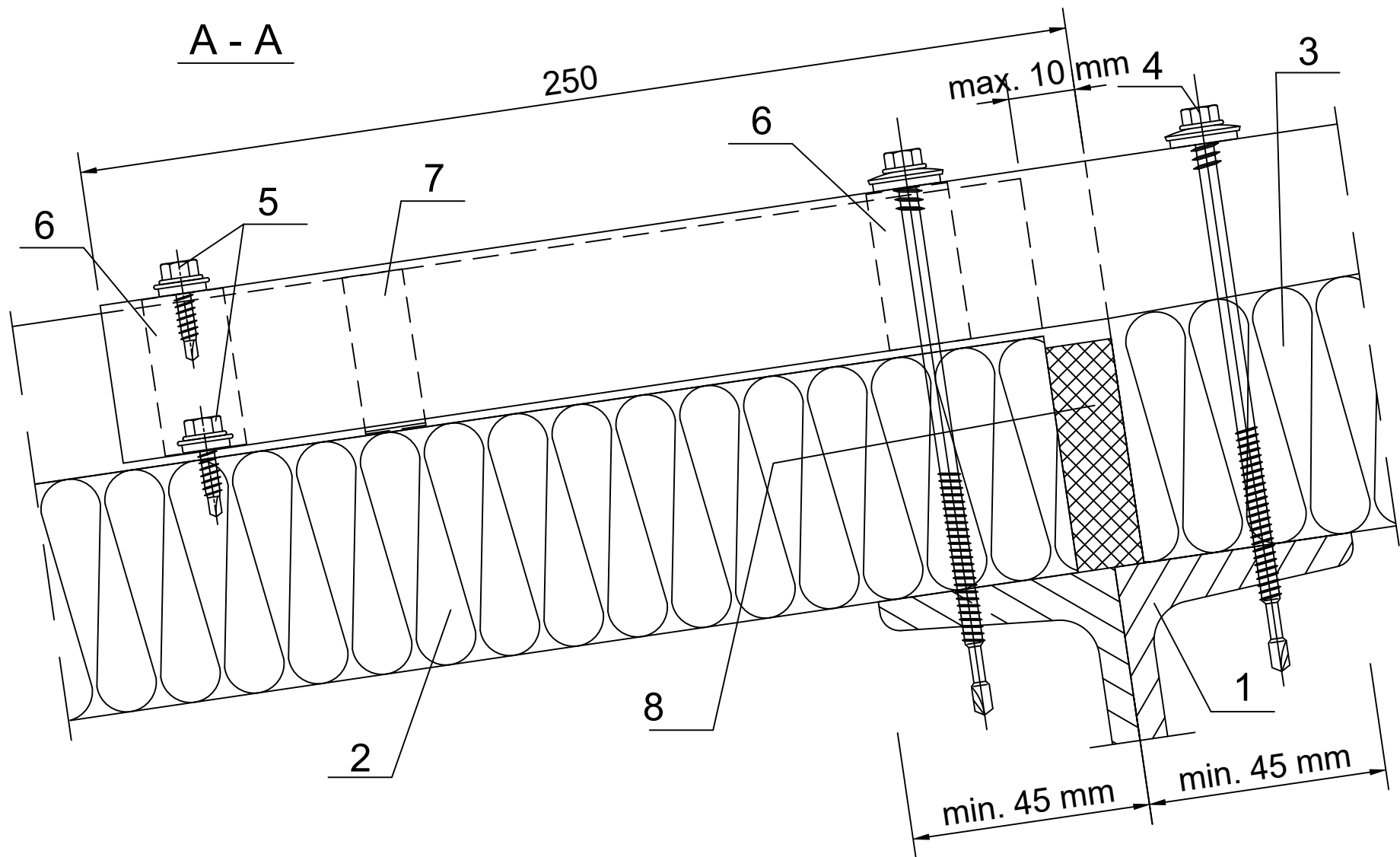


Date	Rev. date	Work nr.	Drw. nr.	Rev.
Drawn by Ruukki	Rev.	M04/S07	-	
Scale 1:3	Building		File nr. P2001/003-00038	



1. Steel purlin acc. to engineering design of the structure (recommended support width ≥ 100 mm)
2. Ruukki SP2C PIR
3. Ruukki SP2C PIR with undercut internal facing core
4. Panel fastener for hot-rolled purlin or for cold-bent purlin - 3 pcs. per panel
5. L03 fastener
6. 4x20 PIR self-adhesive sealant
7. Butyl tape
8. Impregnated polyurethane sealant or expanded foam